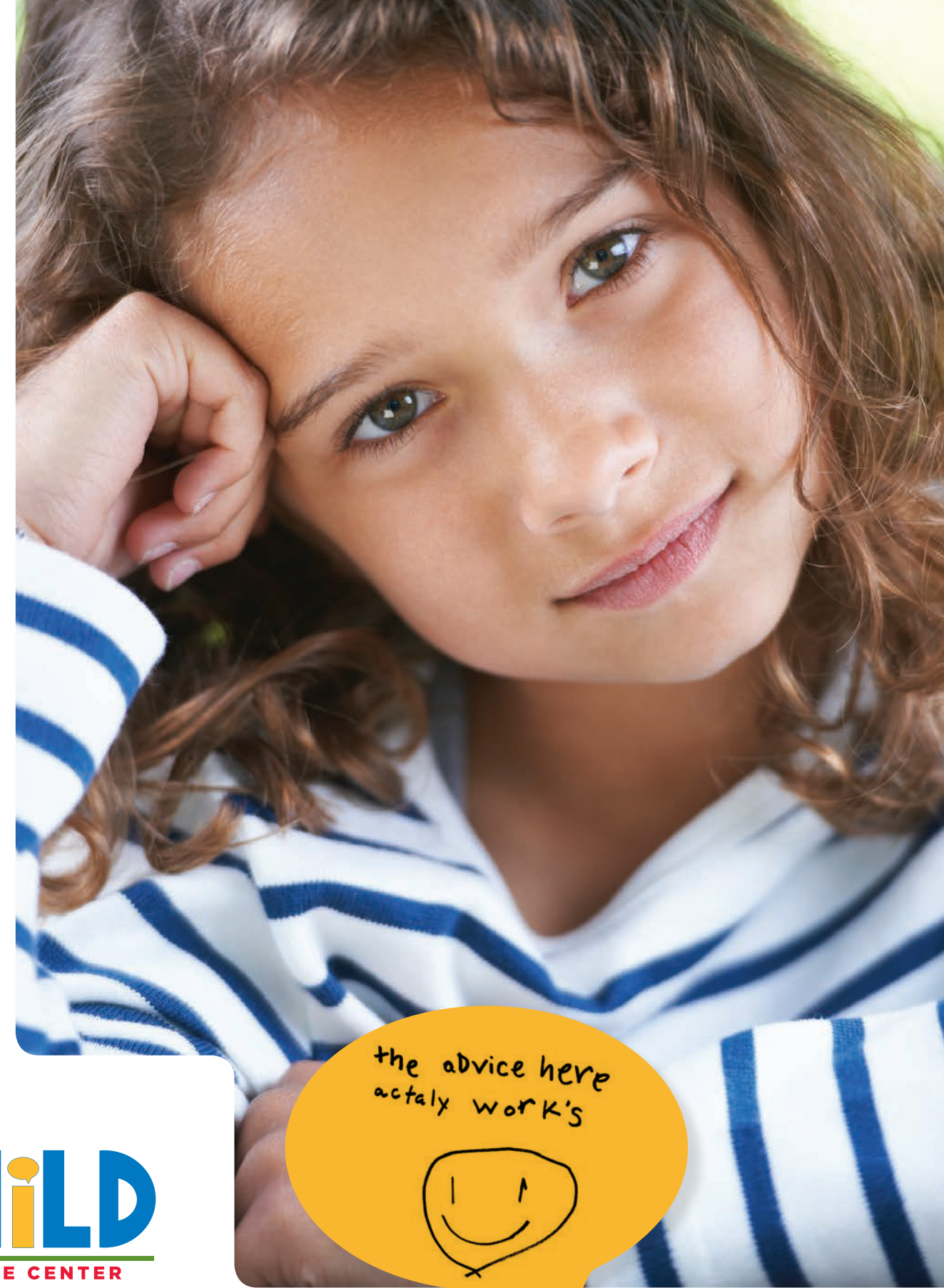




810 W. 45th Street  
 Austin, Texas 78751  
 (512) 451-2242  
 www.austinchildguidance.org  
 Follow us on Facebook, Twitter,  
 Pinterest and LinkedIn

Nonprofit Org  
 U.S. Postage  
 PAID  
 Permit No. 817  
 Austin, TX

THANKS TO OUR SPONSORS AND OUTSTANDING SUPPORTERS!



annual report 2014



# our story

For over 64 years, the Austin Child Guidance Center has been recognized as a community leader in the provision of children's mental health services. Our story expands over six decades and brings together many threads and voices that have created real change for local families. In this FY2014 Annual Report, we look back on our incredible history of contribution to the mental well-being of our community.

The Center had a prosperous year of accomplishments. We were selected into the inaugural "Capacity Academy" through the St. David's Foundation, supporting the streamlining and integration of our technological systems and client processes. We launched a new website through the support and generosity of Intel and their team of dedicated volunteers. This new site is mobile friendly, easy to navigate, connects to our social media accounts, and incorporates our new brand and logo.

ACGC planned and is poised to deliver the first-ever Cross-Discipline Trauma Conference of Central Texas, which will bring together 500 professionals from across the country for two days of training in 2015. The agency's Director of Program & Trauma-Informed Services, Seanna Crosbie, LCSW has been leading efforts in trauma trainings and outreach within the city, educating the community on the profound importance of treating trauma early-on.

The Center has focused on the mental health of employees. The agency began a Social Support Committee that organizes activities, community volunteer projects, and staff appreciation

opportunities. Within the last year, ACGC has started a weekly mindfulness meditation session, as well as a weekly yoga class for staff members, to encourage self-care, relieve stress, and promote health and wellness.

On a personal note, my term as President of the Board expires and I pass the baton to Nicole Huff's capable hands. It has been a privilege and pleasure to be involved with a deeply talented group of people building a cutting edge organization with growing sophistication to meet the mental health needs of Central Texas. ACGC makes a positive difference every day and the work only grows. We are extremely grateful to our invaluable donors, supporters and partners who uplift our mission. In 2016, we will celebrate our 65th Anniversary, and we have so many individuals to thank who have helped to create our story of hope. ACGC's incredible service now expands across multiple generations and historic community changes, offering meaningful, local, systemic change within the field of mental health.

Gratefully,

Joel Fleschman, LCSW, MPH  
Board President, 2014



I like ACGC because it really helped and it's really playing games and talking about my feelings

It is from a position of retrospect that our family remains thankful and gracious to the Austin Child Guidance Center's program and staff. Our involvement with the Austin Child Guidance Center started with an unwelcome situation involving both substance abuse and event of domestic violence.

We feel the help and resources available to us through the Austin Child Guidance Center were invaluable in the process of healing as individuals and as a family. From our initial consulting visit to the series of subsequent counseling visits, we were all able to gain the clarity as to how to approach the steps of healing from this event.

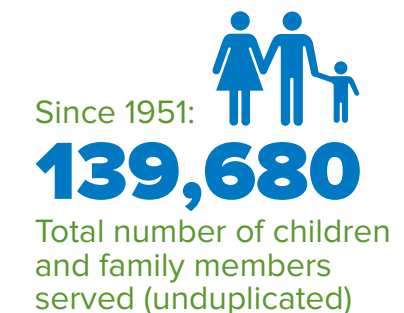
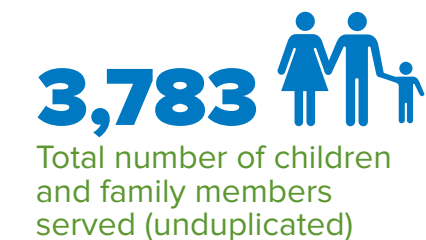
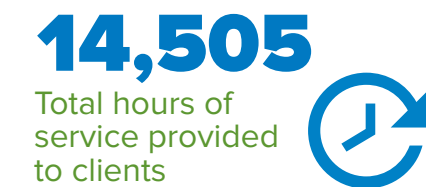
—ACGC client

### About Us

In 1951, Austin Child Guidance Center became Austin's first outpatient mental health facility solely dedicated to children's mental health. To this day, ACGC remains the leader in affordable mental health care for Austin area children and their families. ACGC predominantly provides services to underserved children who might otherwise go without care. Throughout its history, the agency has used a multidisciplinary approach, with psychiatrists, psychologists, social workers, and professional counselors to treat children and their family members. The agency is a recognized premiere training facility for future and current therapists. Bilingual services are offered in our main office at 45th and Lamar, as well as in various community settings.

### Our Mission

To improve the mental health of children and their families through early intervention, diagnosis, and treatment to help them develop the emotional skills for meeting life's challenges.



# our core services

The Center's core therapeutic services are offered on-site at our central location. ACGC's multi-disciplinary team of therapists utilizes evidenced-based treatments to work with children experiencing: anxiety, trauma, physical and sexual abuse, grief, neglect, depression, divorce, adoption, parent child relational issues, substance abuse, disruptive behavior disorders, and learning and communication disorders.

## Individual Therapy

Therapists take a strengths-based approach to help children work through existing issues. It focuses on the child's needs and what is developmentally appropriate. The child is treated within the context of the family, and incorporates parents and family members in the plan for treatment.

## Family Therapy

Treatment extends to all family members and guardians in the child's life. Because change does not occur in a vacuum, family members are encouraged to work together to heal and learn new patterns of behavior.

## Group Therapy

In order to promote positive peer relations, children in group therapy practice problem-solving and learn ways to build their self-esteem and improve social skills. In group work, children practice managing conflict, negotiating social situations, and reaching consensus.

## Psychiatric Services

Psychiatric evaluations are provided to children with complicated symptoms and where psychotropic medication may be clinically indicated. These evaluations are available to children currently engaged in therapy at the center. It integrates biological, psychological, and social factors that influence functioning.

## Psychological Assessments

A psychological assessment is a process of gathering information in order to learn more about a child and to inform treatment decisions. The assessment can be useful for determining a specific diagnosis, such as a learning disability, Attention-Deficit/Hyperactivity Disorder, or an Autism-Spectrum Disorder, and is also helpful when parents, teachers, therapists, or other providers are confused about a child's behavior and how to intervene.

## Walk-in Clinic

The walk-in therapy clinic at the Center provides immediate counseling to children and family members on a sliding fee scale. No appointment is necessary. Clients are seen first-come, first-serve every Friday from 2 p.m. to 4 p.m. by licensed Psychologist Arnie Slive, Ph.D. and a team of qualified mental health professionals.

## Parent Workshops

In 2014, ACGC expanded educational workshops geared toward parents. Classes on various topics are now provided in English and Spanish and at no cost to families.


## Sliding Fee Scale

All services are offered on a sliding fee scale rate for un-insured/under-insured clients. No child is turned away for inability to pay for services.

## Latino Children's Mental Health Initiative

Initiated through one-time funding from Travis County Health and Human Services, and RGK Foundation that supported the expansion of therapy services to Spanish speaking children and families.

*A total of 745 clients and 994 family members were provided one or more of the Center's core services in the 2014 fiscal year.*

**79%**   
Percentage of clients  
(living at or below  
200% of the federal  
poverty level)

**1660**   
Calls requesting therapy /  
assessment services

"This is a place where  
you come to get help no matter  
how bad it is and you can  
always know that when you  
come out you will be a new  
and better you."

The Austin Guidance  
Center!

Ben was an 8th grader struggling with his self-image due to being bullied about his weight from peers. He was having difficulty with their harsh interactions, avoiding going to class, and was suffering academically. His mother worried about her son's sadness and school performance.

Fortunately, his school recognized that he would do well in Middle School Matters, where mental health services are provided on-site at middle school campuses by the Austin Child Guidance Center. Ben began individual therapy sessions, as well as some sessions with his family. Soon, his attendance became consistent and his academic performance improved significantly. Ben joined a school athletics team and began to enjoy the new relationships he formed with his teammates. Through his work with the therapist, Ben began to recognize how to deal with comments from friends and see himself in a more positive light.



Tasha, an 11-year-old girl, had experienced physical abuse from her stepfather. In order to get away from her abuser, Tasha and her mother moved to Austin. Their move caused financial strain for the family and necessitated a change to a new school where Tasha experienced harassment from her peers. The abuse and torment at school caused Tasha to have difficulties sleeping, dissociation, tantrums and angry outbursts. To help Tasha heal from her emotional pain, she was brought to Austin Child Guidance Center where she and her mother participated in a combination of individual and family therapy. Through their work in therapy, Tasha and her mother were able to work through the feelings and the trauma associated with the abuse. Tasha also gained coping skills to help her address the bullying at school and prevent future victimization. At the end of treatment, Tasha's intrusive thoughts about the abuse had stopped, and she was able to regulate her emotions.



"ACGC is special to me because, It's easier to talk about myself and share my feelings. That is really important to me" 

## our partnerships

Austin Child Guidance Center partners with several agencies and participates in a number of collaborations in Austin/Travis County, including:

### Community Clinic

The TANDEM Project is a collaboration with People's Community Clinic, Any Baby Can, and LifeWorks to promote optimal levels of health, education, and vocation; as well as social and family functioning to reduce the risk of subsequent teen pregnancies. The project serves pregnant teens and teen fathers receiving prenatal care at People's Community Clinic. ACGC provides the mental health component, which includes individual & family therapy; psychological assessments; and psychiatric evaluations. **162 youth and 5 family members served in 2014**

### Childcare Centers and Preschools

The Infant and Early Childhood Mental Health Project (IEC) is a United Way Success by Six funded project. The overarching goals are to promote the social and emotional health of children so they are prepared for school and future success, as well as to educate and provide guidance to childcare staff and parents on infant and early childhood developmental issues. ACGC licensed mental health professionals and interns work onsite at 8 local, high-needs childcare centers. IEC is also supported by Travis County HHS, Episcopal Health Foundation, and 3M. **254 children, 59 family members, and 39 childcare workers served in 2014**

### Middle Schools

Middle School Matters is a collaborative project funded by United Way for Greater Austin. Through this initiative Austin Child Guidance Center delivers on-site mental health support and counseling services at three at-risk middle schools: Mendez Middle School, Decker Middle School and Webb Middle School. **72 youth and 51 family members served in 2014**

### Juvenile Court Project

In the Juvenile Probation Services Division, ACGC therapists provide mental health screenings, psychiatric and psychological services, and individual, family and group therapy. These services are conducted at multiple sites including ACGC, the Intermediate Sanction Center, the Day

Enrichment Program, local schools and client homes, which ensures that Juvenile Court clients have easy access to quality mental health services. **611 youth and 7 family members served in 2014**

### Victim Services

**Children's Victim Recovery Project** is a program that helps children and families recover from the psychological effects of crime, violence, and abuse. Any child or adolescent who was a victim or witness to crime or violence is eligible for treatment services at no cost. Funding is provided by grants from the Office of Texas Attorney General and the Office of the Governor Criminal Justice Division. **98 youth and 156 family members served in 2014**

**Kids In The Middle Project** offers mental health services and support to children and families involved in high conflict divorce, family violence, or custody issues. Funding is provided by grants from the Travis County Domestic Relations Office and the Travis County Counseling and Education Services Department. **11 youth and 14 family members served in 2014**

**Trauma-Informed Care Consortium (TICC)** was established in 2013 through the generous support of St. David's Foundation. TICC, led by Austin Child Guidance Center, brings together professional organizations throughout Central Texas to address the trauma needs of children and families. TICC is made up of over 50 community partners from a

variety of professions: mental health clinicians, school personnel, medical/nursing professionals, occupational/physical therapists, law enforcement, and juvenile justice professionals. The consortium meets quarterly to network, share information, coordinate trainings, as well as to create a trauma-informed newsletter and maintain the [www.traumatexas.com](http://www.traumatexas.com) website. In addition, ACGC provides trainings to organizations and groups on trauma and trauma-informed care. **ACGC trained 715 individuals on trauma and trauma-informed care in 2014**



Cuando vengo me gusta tener tiempo para mi misma con mi consejera.

**5,484**  
Total number of volunteer hours

**430**  
Total number of volunteers

**17**  
Total number of graduate students trained

# community outreach

## Training

As a local leader in mental health care for children, ACGC is recognized as a premiere training center for graduate students and mental health professionals in the greater Austin area. Student interns from many disciplines receive high quality training at the Center, which assists in the agency's scope of work, outreach and impact on clients.

For the past year, Austin Child Guidance Center has been preparing to host the Cross-Discipline Trauma Conference of Central Texas, which is the first of its kind for Central Texas. The conference will feature internationally known speakers within the field of trauma, including: Bruce D. Perry, M.D., Ph.D., Senior Fellow of the Child Trauma Academy; Vincent Felitti, M.D., Co-Principal Investigator of Adverse Childhood Experiences (ACE) Study; Erica Miller, Ph.D., Clinical Psychologist and Holocaust Survivor; and Ginny Sprang, Ph.D., Executive Director, University of Kentucky Center on Trauma and Children & Co-Chair of National Child Traumatic Stress Network Secondary Traumatic Stress Collaborative.

## Special Events

ACGC hosted an array of special events during FY2014. We started the year off with Trivia Night at FRANK in honor of Children's Mental Health Awareness Day. Teams from Gallagher & Co., ATCIC Child & Family Services, CASA of Travis County, Frost Bank, VMWare, and more joined us for an intense night of trivia! We also hosted several third party events with local businesses which include partnering with The W Hotel, the Mohawk Austin, and Kendra Scott. Supporters Don & Lise Grillo opened up their lovely home in the Towers of Town Lake for our holiday donor appreciation party.

The 3rd annual "Austin Originals" Benefit Concert and Live Taping surpassed past years in ticket sales and revenues thanks to the leadership of our Honorary Chair, Cassie LaMere of Lexus of Austin. The new location at the Austin Music Hall allowed for twice as many guests, reaching over 500 supporters in attendance. H-E-B Tournament of Champions returned as the presenting sponsor and Robert Hadlock of KXAN served as the event's emcee, who presented the 3rd annual Phyllis Richards

Austin Icon for Children Awards to Maxine Roberts and Barri Rosenbluth. For the first time ever, the concert featured two musical acts; the Wheeler Brothers & LaTasha Lee and The Blackties. The event raised \$266,849 which will assist the agency in providing quality mental health services to underserved families.



## Volunteerism

Each year our volunteers continue to amaze and inspire us. We are so fortunate to be allied with so many outstanding individuals who support our mission. Our Play Leaders are trained in trauma-informed care and provide a structured, safe, and fun environment for clients. Garden volunteers help us maintain and groom our Children's Healing Garden, which serves as a therapeutic space for our clients. Moreover, our professional volunteers who serve on planning committees and board have facilitated meaningful connections, ideas, leadership and support to help increase the impact of our mission within the community.

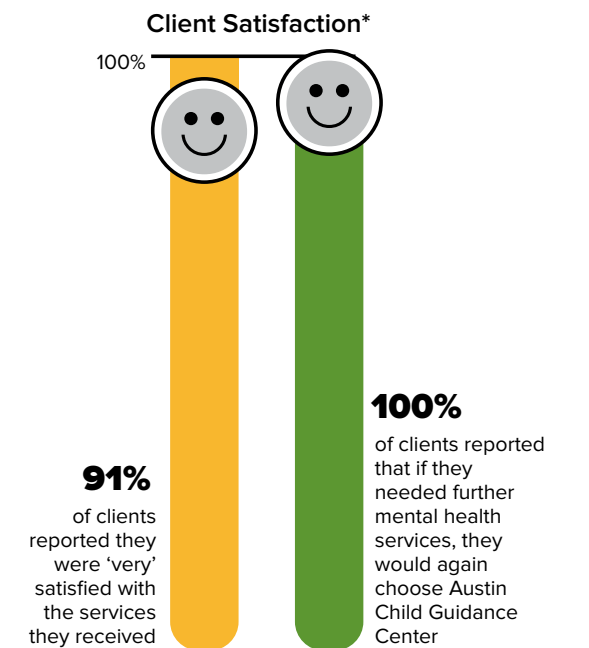
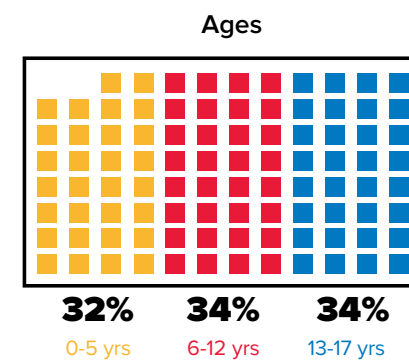
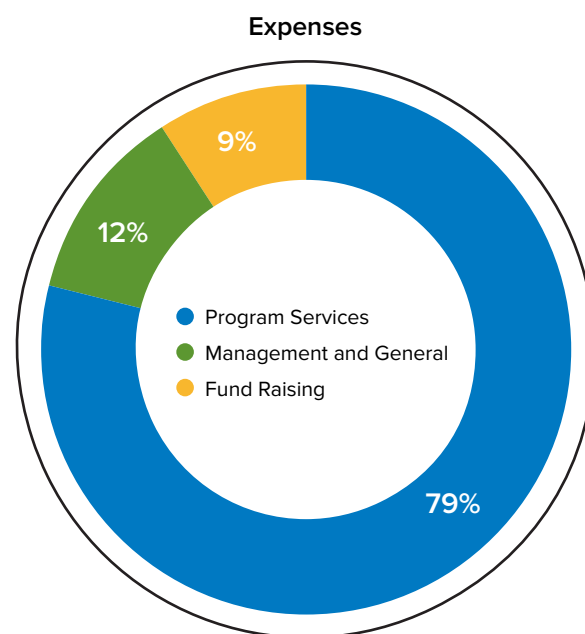
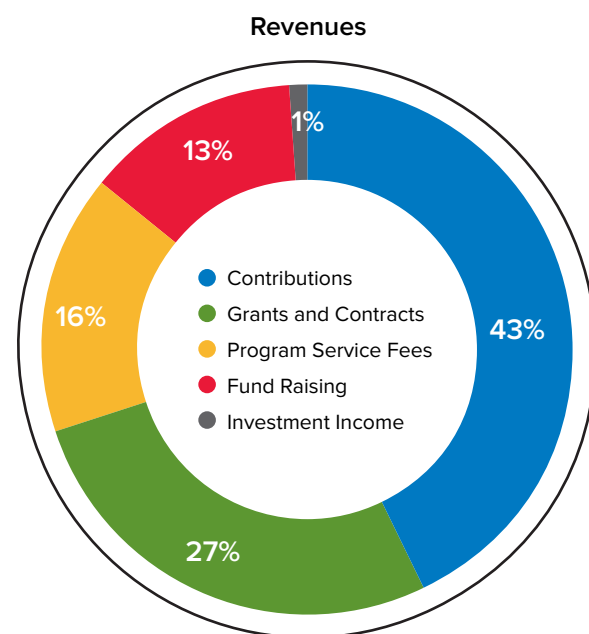
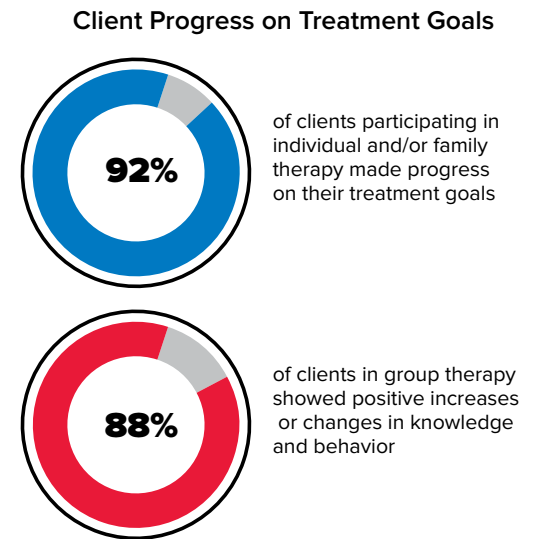
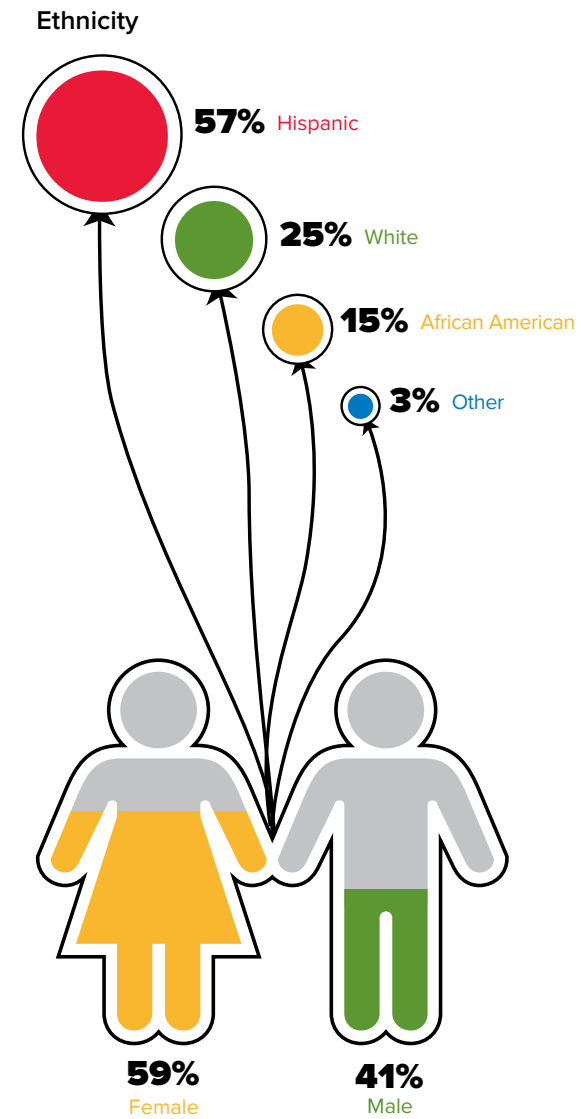
We would like to say thank you to the remarkable corporate teams and organizations who volunteered with us. In 2014, we welcomed volunteers from: Bazaarvoice, Texas Women in Business, Intel, Nordstrom Rack, VMWare, Austin Outdoor Social, Texas Sweethearts, Texas Wranglers, Kuhn Scholars, Students of the World UT Chapter, Ann Richards Young Women Leaders School, FBC Howe, the International Association of Exhibition & Events-Central Texas Chapter, and Literacy Coalition of Central Texas - AmeriCorp VISTA.



## Statement of Financial Position

Years ending August 31	2014	2013
<b>Assets</b>		
Cash	\$217,915	\$36,963
Accounts receivable	413,498	843,802
Prepaid expenses	17,682	14,741
Board of Director designations	15,843	15,839
Pledges receivable	41,871	63,650
Fixed assets	60,502	59,817
Other assets	148,457	130,457
<b>Total assets</b>	<b>\$915,767</b>	<b>\$1,165,268</b>
<b>Liabilities and Net Assets</b>		
Liabilities		
Accounts payable	\$17,383	\$5,903
Accrued payroll expenses	87,962	80,651
Deferred revenues	5,055	5,604
Total liabilities	110,400	92,158
Net assets		
Unrestricted	150,530	113,082
Temporarily restricted	545,073	850,364
Permanently restricted	109,764	109,664
<b>Total net assets</b>	<b>805,367</b>	<b>1,073,110</b>
<b>Total liabilities and net assets</b>	<b>\$915,767</b>	<b>\$1,165,268</b>

## Statistical Overview Fiscal Year 2014: September 1, 2013 - August 31, 2014





# austin child guidance center

When I started as Executive Director in 2010, my office was in the administrative area, a bit removed from the day-to-day operations of the Center. We had one open office at that time, which was a small space that had been created by enclosing off a portion of the waiting room some years before. I told the staff I was moving to that space. "You don't want that office," I was told. "It's too small, too loud, cold in the winter and hot in the summer." It was vacant because it wasn't suitable for therapy or even as an office.

They were right. It's small, loud, cold in the winter and hot in the summer. It's also the perfect space because it is right at the end of the hallway where our families come and go. It's ACGC's crossroads. I see children at the beginning and end of their journeys. I see parents heading down the hall with worry and fear and when they come back, with relief and support. I see compassionate, dedicated staff members. I get occasional visits from little brothers or sisters who duck out of the Play Room and into my office. I know when school is out by the noise level of children playing and families conversing in the afternoons. I see and talk with passing staff members when they are having difficult days and when they are filled with joy. Through my window I see therapists walking outside with teenage clients who need to move around, and volunteer groups landscaping our Children's Healing Garden. I see all of the small, one-on-one interactions that comprise the huge sum of our work.

The need for our services continues to grow, and ACGC has embarked on a multi-year journey of incremental, sustainable, data-driven growth of services to children and families. We will grow through building our partnerships out in the community and expanding our footprint at our central location. In the coming months and years we will define what that expansion will look like. Austin Child Guidance Center will always be the crossroads between despair and hope, helping children and families find their way. It is seldom an easy path. So what if my office is small, loud, cold and hot? The crossroads is the place to be.

Russell A. Smith, LMSW  
Executive Director

## Board of Directors 2014

- Joel Fleschman, LCSW, MPH, President
- Nici Huff, Vice President
- Mary Knight, Treasurer
- Sarah Swords, LCSW, Secretary

- |                 |                       |
|-----------------|-----------------------|
| Sarah Farley    | Cassie LaMere         |
| Mirna González  | Casey McPherson       |
| John Harcourt   | Sherrill Morales, CPA |
| Denise Hoos     | Rich Parsons          |
| William Jackson |                       |
| Suzon Kemp      |                       |

**1,657**  
Facebook likes

**905**  
Twitter followers

*The services I've received have been excellent. I was very concerned about my daughters mental health and she's going to be just fine. My daughter has gotten the help she needed to cope with everything that's going on in her life right now.*

### Emeritus Board Members

- Paula Aaronson
- Erasmus Andrade\*
- Cherry Bartlett
- Hub Bechtol
- Margene Beckham
- James L. Boynton, M.D.
- Dr. Howard Burt
- Irby Carruth
- Johnnie Cavanaugh
- Dale Chrisman
- Charles Cleland, Ph.D.
- Jon N. Coffee\*
- Maggie Coleman, Ph.D.
- J. Chrys Dougherty\*
- James Evans, Jr.
- Aileen Gilbert
- Brenda Barrett Healey
- Charles Herring
- Susan Holman
- Weldon Horton
- Ira Iscoe, Ph.D.
- David Jaso
- Lynn Roth Jordan
- Jess Kellam
- Kathryn B. Kramer, Ph.D.
- John B. Lay
- Beth Marsh

- James Maynard, M.D.
- Missy McCarroll
- Dr. Tom McCrummen
- Dr. Carson McGuire
- George Meriwether\*
- Malcolm Milburn\*
- Bruce Mills
- Sherry Morgan
- Jim Myers
- Phyllis Nelson, LCSW
- Thomas Oakland, Ph.D.
- Ruthie Oliver
- Paul Paulsen, M.D.
- Beeman Phillips, Ed.D.
- Dr. Ben Primer
- Phyllis Richards, Ph.D.
- Dr. Gretchen Runge
- Philip Sanders
- Lem Scarbrough
- Frances Schenkkan
- Michael J. Schless
- Arthur Shelton
- Hallie Slaughter
- David Springer, Ph.D.
- James Steed
- Calvin Streeter, Ph.D.
- George Villalva
- Dr. Bill Walker

- Lynn Walker
- David Wilson
- Janet Zimmerman, Ph.D.
- David Zodikoff
- \*deceased

### Staff

- Russell A. Smith, LMSW  
Executive Director
- Laura Tweedie  
Director of Finance & Administration
- Seanna Crosbie, LCSW  
Director of Program & Trauma-Informed Services
- Julia Hoke, Ph.D.  
Director of Psychological Services
- Renée Hanson Malone, MA  
Director of Development
- Keith Caramelli, M.D.  
Psychiatrist
- Carolina Arroliga, MA, LPC
- Sarah Baird, LMSW
- Kendall Bintz
- Jill Chrisman, Ph.D.
- Andrea Ciceri, LMSW
- Lisa DeGraff
- Sarah Fankhauser, LMSW
- Effie Faske
- Chrissy Fegan
- Brittany Golden, MSSW

- Diane Hoffman, MA, LPC, LMFT-A
- Julie Hsu, Ph.D.
- Amy Huebel, LPC
- Shlomit Kirsch, Ph.D.
- Mary Klingensmith, MA
- Stephen Kolar, Ph.D.
- Lea Kruger, LCSW
- Catalina Mancera
- Maxine Moore
- Roger Olivarri, Ph.D.
- Kelley Roberts, LMSW
- Rachel Salgado
- Janet Saul, Psy.D.
- Arnie Slive, Ph.D.
- Amy Smith Edwards, LCSW
- May Taylor, Ph.D.
- Louise Tedford, Ph.D.
- Earley Ullrich, LCSW
- Joanna Vega, MSSW
- Melanie Walter-Mahoney, LMSW

Design: Nina Selzer Design  
Photography: Jennie Trower

## Donors: September 1, 2013 - August 31, 2014

Austin Child Guidance Center is incredibly grateful to all of the generous individuals, foundations, businesses, and governmental agencies for their monetary and/or in-kind gifts. Thank you for your continued support.

### Institutional Supporters

#### \$250,000 +

St. David's Foundation

#### \$100,000 - \$249,999

City of Austin Health & Human Services

Travis County Health & Human Services

United Way for Greater Austin

#### \$25,000 - \$99,999

Austin Community Foundation

H-E-B Tournament of Champions

Office of the Governor, Criminal Justice Division

Roddy-Holden Foundation

Texas Office of the Attorney General

Topfer Family Foundation

Travis County Juvenile Justice Center

#### \$10,000 - \$24,999

P. Terry's

RGK Foundation

Shield-Ayres Foundation

Silicon Laboratories

Episcopal Health Foundation

Women's Fund of Central Texas

#### \$5,000 - \$9,999

3M Austin Center

Carl C. Anderson Sr. & Marie Jo Anderson Charitable Foundation

Emerson Process Management

Howdy Honda

Link Foundation

University of Texas at Austin

#### Up to \$5,000

Applied Materials

Arthur J. Gallagher & Co.

Atchley & Associates

Austin Eating Disorder Specialists

Austin Travis County Integral Care

Center for Child Protection

Cleve H. Tandy Foundation

Dell Inc.

James R. Dougherty Jr. Foundation

Episcopal Church of the Resurrection

The John E. Fetzter Institute

Fidelity Charitable Gift Fund

First Unitarian Universalist Church of Austin

Frankenstein Computers and Networking

Franzetti Master Jewelers

Frost Bank

Fuzzy's Taco Shop

Hill Country Chapter of Texas Association for Play Therapy

Horseshoe Bay Resort

Independence Title ~ McMahon Group

KCL Foundation

Kingdom Promotions

KPMG

LCRA Employees' United Charities

Lexus of Austin

Michael and Susan Dell Foundation

Microsoft Matching Gifts Program

Miller Blueprint Co.

New York Life Insurance

Nvidia Corporation

Randall's Good Neighbor Program - Safeway

Seton Family of Hospitals

Silicon Valley Community Foundation

Simons Family Dental Center

Joni Templeton Charitable Trust

Texas Sweethearts

Truist

Trull Foundation

United Way of Metropolitan Dallas

United Way of Williamson County

University Federal Credit Union

Jay and Connie Wiese Family Charitable Fund

White Hat Rum

Whole Foods Market

Women Partners In Health

### Individual Supporters

#### Captain (\$5,000+)

Sharon Bischofshausen

Mary & Steve Knight

Robert L. Miller

#### Helmsman (\$2,500-\$4,999)

Christy & Dale Biermann

Kelly & Tina Folts

John Harcourt & Sue Ellen Stavrand

Dr. James Maynard & Cynthia Treglia

James Michael Moosy & Nahal Delpassand

Valerie Myers, LCSW

Dr. Phyllis Richards

#### Sailors (\$1,000-\$2,499)

Paula & Lee Aaronson

Danielle Ammon

Anonymous (19)

Emily Campbell

Rebekkah Cole

Brian Dawson

Carol de la Torre & Rob Klausmeier

Sam & Valerie Dunnam

James Evans & Gene Krane

Sarah & Bob Farley

Dr. Dorothy & Benjamin Fruchter

Mirna A. Gonzalez

Chris Grunski

Israel & Dietlind Smith Hernandez

Denise Hoos

Nicole Huff

Andy Karr

Stephanie McCollough

Kristi Moriarty

Jef & Phyllis Nelson, LCSW

John Olsson

Rich & Rachael Parsons

Michael and Lori Schneider

Frank D. Schubert, Ph. D.

Bob Sechler & Tara Muldrow

Russell & Jill Smith

Patti Stoetznr

Sarah Swords, LCSW & Franklin Kalk

Kimberly and Michael Taylor

Craig Vinson

Bruce Zimmerman

#### Donors (\$100-\$999)

Laurie Adams

Dr. Ace & Nan Alsup

Anonymous (8)

Carolina Arroliga

Marinette Asuncion-Uy

Karen Ashworth

Bonnie L. Bain

Jet & Cherry Bartlett

Sandy T. Bayne, JD, LLM

Margene & Pat Beckham

Belle Ku & Bryce Benjet

Deborah Berra

Judith Biehn

Josephine Bintz

Karen Bintz

Kendall Bintz

Thomas Bintz

Marissa and Art Borrego

Kristi Bradford

Erin Breitenbach

Annie Bright

Joe Brown

Cecelia Burke

Jordan Burns

Tim & Susan Burris

Judge Darlene Byrne

Britton Byfield

Dr. Kira & Graham Carey

Michelle Cervantes

Amy Chally

David Clafin

Maggie Coleman & John Knowles

Gary & Charlotte Cooper

Lynz Costa-Adams

Cody Cowan

Fred Crawford

Judy Darling

Marcela De La Fuente, Ph. D.

Patricia Dean

Mitch Deane

Lisa DeGraff

Hannah Delgado

Kathleen Duncan

Patrick Ekstrum

Luke Ellis

Carol Faget

Christine and Derrick Fegan

Dr. Rolland & Julie Fellows

Tracey Fisher

Christopher Flores

Ralph & Margaret Flores

Julie & Joel Fleschman, LCSW, MPH

Sanford Fleschman

Mary Fogel & David Orton

Donna & Joseph Fowler

Anne K. Freeman

Joe Gagen & Joanne Hopkins

Josie & Frank Geck

Joyce Gentry

Constance Giles

Audrey & Sam Gonzalez

Cass Grange

David & Sally Greis

Don & Lise Grillo

Deana and Mike Hadsell

Cary & Fiona Hakes

Charles Hanson

Renee Hanson Malone

Amadee Harris

Ann and Dave Hart

John Hathaway

Bill Hauser

James R. Haws, Ph.D. & Catherine McCoy

Mike & Brenda B. Healey

Alison Hellmund

Sharon G. Horowitz, Ph. D.

Daniel Holland & Rina Ruttenberg

Susan & Alan Holman

Julia Hoke, Ph.D. & Mike Boyle

Jeanette Hutchinson

Margo Iwanski

Meghan and Curt Jackson

Arthur & Ann Jacoby

Sarah Janosik, MSSW

Roxanne Jenkins

Gary Jeter

Patrick Johnson

Dana & Brick Jones

Melanie and Charlie Jones

April Justice

Dave & Julie Keim

Dr. Patricia Koch

Dr. James & Elizabeth Kreisle

Daryl Kunik

John B. Lay & Melodie Crane

David Leppo

Sanford & Cynthia Levinson

Mike Leviton

Leslie Lily

Cathy Lott

Deborah S. Lyons, Ph.D.

Mary Manceaux

Catalina Mancera

Dayna Manning

Daniel & Lori Mannion

Beth Marsh

Imo Martinez

Susie G. Matthews

Carl & Joyce McClendon

Dr. John & Suzanne McFarlane

Dennis & Nancy McFadden

Matt & Alison McGauley

Scott & Jennifer McGraw

Ann B. McIver

William & Melanie McLeroy

Hedrich Michaelsen

Erica Miller, Ph.D.

Bruce & Judy Mills

Kathleen Monahan

James Montanaro & Marcia Tugendhat

Joseph Moore

Alex & Sherrill Morales

Eliza & John Morehead

Anne Nelson

Marlowe Niemeyer

Nancy L. Nussbaum, Ph.D. & John

Weizenbaum

Joanne F. Olsen, LCSW

Roy E. Olson

Carmen Ortiz

David Orton

Theodore Owens

Kristin Parsons

Sherry L. Payne, Ph.D.

Nancy & Doug Phelan

Elizabeth & Craig Powell

William E. Powers

Megan Poore

Jill Power

Craig Primozich

Kent & Kathy Rider

Sally and Brad Robb

Hali Rode

Lisa Roe

Jason Roseman

Robert Rubacha

Mark Russell

Meanette Salgado

Jean and Al Sander

Frances & Pete Schenkkan

Richard W. Schmidt

Veronica Segura

Milton Shaevel

Traci Simons

Kimberly & Michael Smith

Dr. Stephen & Dale Sonnenberg

Julia Spann

Suzy Spencer

Sidney Storey

Dr. Calvin & Diane Streeter

Tim & Gail Sulak

Karen Swenson & Ken Cauthern

James Tai & Diana Gay Weihs

William Tedford

Grant & Margot Thomas

William & Jane Tullis

Jim & Caren Upshaw

Ben Vallefucio

Christa Vassilliere

Scott Venckus & Mary Eberlein

Tim & Melanie Walter-Mahoney

Dianne Warburton

Karen & Richard Watts

Paula Wendling

Mary Ellen West, LMSW

Barbara W. White, Ph.D.

Matt Williams

Karen & Gordon Wise

Andrea Wolz

Rachel Young

Sam & Patricia Zigrossi

Harry Zimmerman

Dr. Janet Zimmerman

Keith Zimmerman

### Austin Originals Benefit Concert

September 26, 2014

#### Presenting Sponsor

H-E-B Tournament of Champions

#### Production Sponsors

Carl C. Anderson Sr. & Marie Jo Anderson

Charitable Foundation

Silicon Labs

#### Silver Sponsors

Atchley & Associates

Den Property Group

Frost Bank